

## AUTOMATED COLONY COUNTING

# Sorcerer



### **Sorcerer automated colony counting**

---

- Instantly counts pour, spread and spiral plates; filters & 3M Petrifilm
  - Stores configurations for multiple applications e.g. Ames, TVC, Coliforms
  - Comprehensive measurement macro builder offers maximum flexibility in setting up measurement parameters
  - Advanced, small footprint Petri-viewer offers a range of illumination options for different types of growth media
  - Designed to comply with Good Laboratory Practice, FDA 21 CFR Part 11 and other international regulatory requirements
  - Data transfer to Microsoft Excel, Microsoft Access and Oracle
  - Software runs under Windows 95, 98, NT4, 2000 and XP
- 

**Sorcerer** is the latest in a highly successful series of colony counting systems from Perceptive Instruments. It combines sophisticated image processing and analysis with an innovative Petri-viewer to provide fast, accurate counts of bacterial and mammalian colonies. Sorcerer is ideal for laboratories engaged in drug development and production, food and milk testing, environmental monitoring and public health.

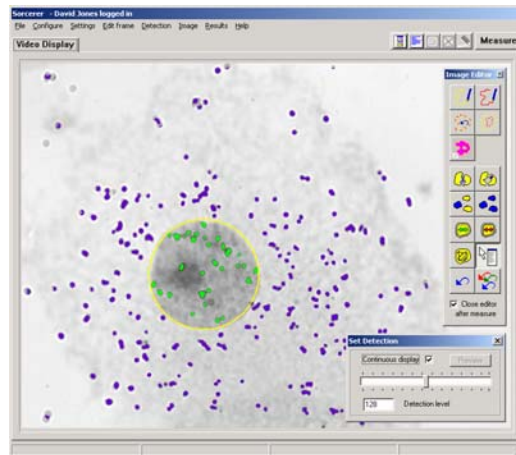
The small footprint Petri-viewer utilizes incident, dark-field and transmitted illumination for different types of nutrient agars and other growth media. The use of cool white light ensures excellent contrast between colonies and substrate. The CCD camera and automatic lens relay a live image of the sample to the computer screen.

Sorcerer lets the laboratory supervisor create different configurations optimised for each application, for example TVC, Coliform, Ames etc. Each configuration includes system settings such as type of illumination, lens aperture, detection sensitivity and prompts for sample codes and dilution factors.



In routine use, the user selects the required configuration, enters text against headings and places the sample in the Petri-viewer. A single click starts the measurement sequence as defined by a macro. Usually this includes commands to automatically separate overlapping colonies, highlight detected colonies in color and compute the count. It is also possible to include commands to eliminate objects such as debris based on their size, shape and intensity.

Sorcerer has facilities to overcome the often encountered problems caused by cloudy media, irregularly shaped growths and unevenly poured plates. A range of image editing functions allows authorized users to interactively modify the image when required e.g. to remove contaminating particles.



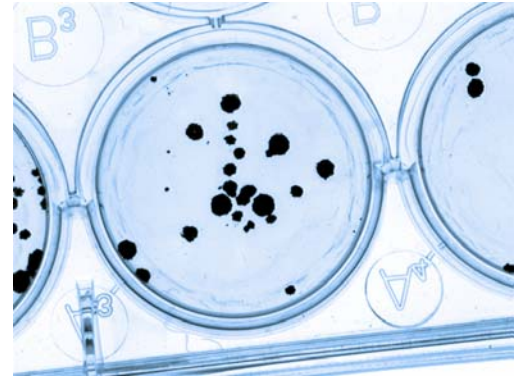
Results are shown on screen after each measurement and they can also appear instantly in a Microsoft Excel workbook. It is even possible to open up an Excel workbook containing sample codes,



Perceptive Instruments' Quality Management System has been awarded approval to the international standard ISO 9001:2000 by Lloyd's Register Quality Assurance, the UKAS & RAB accredited certification body.

dilution factors etc. and instruct Sorcerer to carry out measurements from within Excel itself. Data can also be transferred directly to Microsoft Access and Oracle database tables.

Sorcerer has comprehensive software for analysis of individual objects thereby allowing colonies to be classified according to their size.



Sorcerer is designed to conform to international GLP's and other regulatory requirements. Encoded audit trail files automatically record all system activity and all data. It is fully compliant with the FDA 21 CFR Part 11 Final rule on Electronic Records & Electronic Signature.

Comprehensive support is available for specific data processing requirements, such as integration with barcode readers, LIMS and other third party software.

---

**Sorcerer** can be used for many more applications including:

- Mouse lymphoma assay
- Unscheduled DNA synthesis
- Particle size and shape analysis
- Chemotaxis
- Inhibition zone measurements
- ELISPOT assays
- Multipoint plate scanning
- Plaque counts
- Direct Epi-fluorescent microscopy

## PERCEPTIVE INSTRUMENTS

Blois Meadow Business Centre • Steeple Bumpstead • Haverhill • Suffolk • United Kingdom • CB9 7BN  
Telephone: +44 1440 730773 • Fax: +44 1440 730630  
[sales@perceptive.co.uk](mailto:sales@perceptive.co.uk) • [www.perceptive.co.uk](http://www.perceptive.co.uk)